

MANAGEMENT SOFTWARE

SIRAM ACCESS

High Accuracy
+99%

Vehicle Access Control



SIRAM ACCESS WEB

SIRAM ACCESS SUITE

Access control platform using automatic license plate recognition.

SIRAM Access offers two product families differentiated by their architecture:

Access Suite based on Client/Server architecture

Access Web based on Web or Cloud architecture

SIRAM ACCESS SUITE



- ✓ Client/Server Architecture
- ✓ Modular and Scalable Suite
- ✓ Real-time Visualization (Siram Viewer)
- ✓ Incident Management (Siram Incident)
- ✓ Movement Queries (Siram Manager)
- ✓ User Loading from Active Directory
- ✓ Mini, Lite and Server Versions

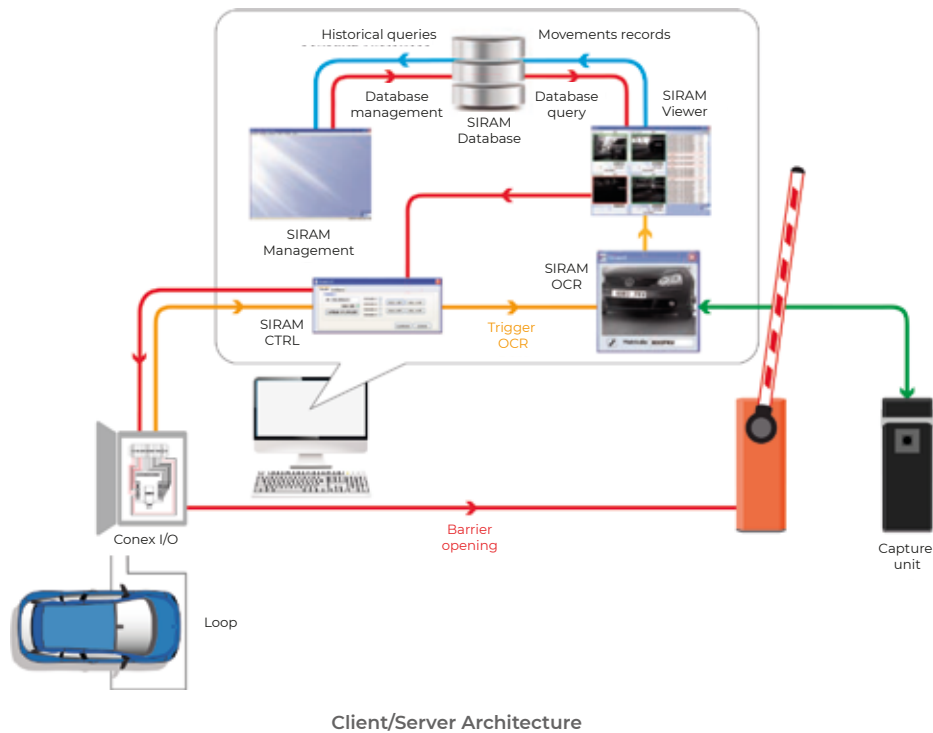
SIRAM ACCESS WEB



- ✓ Web Architecture
- ✓ On-premise or Private Cloud
- ✓ Real-time Visualization (Web Browser)
- ✓ Incident Resolution (Web Browser)
- ✓ Movement Queries (Web Browser)
- ✓ Stand Alone Operation of the Lane
- ✓ Lite and Server Versions

The intelligent automatic license plate recognition system (SIRAM) allows for the automatic identification of vehicles entering different types of parking areas, controlled access facilities, or circulating on specific roads. The system records each transit in a log with the following data: recognized license plate, date and time of transit, the road where it occurred, and the associated image.

SIRAM ACCESS is a highly useful tool for matters related to the security of people and assets, traffic management, and restricted access control to premises or urban areas.



The design has been carried out following a modular and scalable architecture with the purpose of providing a versatile, distributed, and robust application. The complete system consists of the following software elements:

OCR SOFTWARE (SIRAM OCR - SiramN.exe): This software enables automatic license plate recognition for each capture unit.

CONTROL LOGIC SOFTWARE (SIRAM CENTER - SiramCenter.exe): This central software is responsible for executing control logic and recording movements in the database. It communicates with the other applications: OCR, CTRL, Viewer, and Incidents.

VISUALIZATION SOFTWARE (SIRAM VIEWER - SiramViewer.exe): It allows live viewing of each lane and control of the barriers.

MANAGEMENT SOFTWARE (SIRAM MANAGER - SiramManager.exe): This software controls the database, enabling additions, deletions, blacklists, and queries.

INCIDENT MANAGEMENT SOFTWARE (SIRAM INCIDENT - SiramIncident.exe): It displays the incidents that occur in the system, allowing the user to authorize or deny access according to their criteria.

I/O CONTROL SOFTWARE (SIRAM CTRL - SiramCtrlN.exe): This software supervises the control electronics (SIRAM CONEX).

CLEANUP SOFTWARE (SIRAM CLEANER - SiramCleaner.exe): It is responsible for deleting images and all records from the database that have expired.

WATCHDOG SOFTWARE (CONTROL SIRAM - ControlSiram.exe): This software is in charge of executing and supervising all processes in the Siram Suite.

FUNCTIONALITIES ACCESS SUITE

SIRAM ACCESS SUITE for vehicular access control incorporates the following functionalities:

- ⚙ Real-time visualization of associated accesses from multiple computers using the client software SIRAM VIEWER, which has secured access with a username and password.
- ⚙ Management of multiple Authorized Groups. Create, delete, assign multiple vehicles, set expiration dates, and specify the number of spaces.
- ⚙ Management of multiple Blacklists: Add, remove, and modify entries.
- ⚙ Configurable authorized groups for each lane.
- ⚙ Management of the number of spaces per Authorized and per Group.
- ⚙ Multiple stocks.
- ⚙ Multiple user profiles. Assignment of privileges and groups that can be managed.
- ⚙ Attended and Unattended operating modes.
- ⚙ Incident management from multiple computers using the client software SIRAM INCIDENT, which provides secured access with a username and password.
- ⚙ Allows manual entry of movements in the database.
- ⚙ Barrier control from the software. Automatic opening based on authorization, manual opening, open lock and closed lock of the barrier.
- ⚙ Management of the total number of spaces in the parking stock.
- ⚙ Allows up to three camera photographs associated with a lane.
- ⚙ Movement inquiries, group inquiries (authorized, visitors, and blacklists), stay time inquiries, or inquiries about vehicles inside the premises.
- ⚙ User loading from Active Directory with the option to activate Single Sign-On.

OPERATING MODES

Attended (incident resolution):

Stock Exceeded
Vehicle on Blacklist
Vehicle belonging to an unauthorized group in the lane
Vehicle in the visitors' group and unauthorized in the lane
Blank license plate (image without a license plate)
Expired authorization
Group with no available spaces
Authorized with no available spaces

Unattended:

Automatic opening only for Authorized and/or Visitors
Automatic opening for all vehicles at entry and/or exit



SIRAM
ACCESS SUITE

ACCESS SUITE VERSIONS

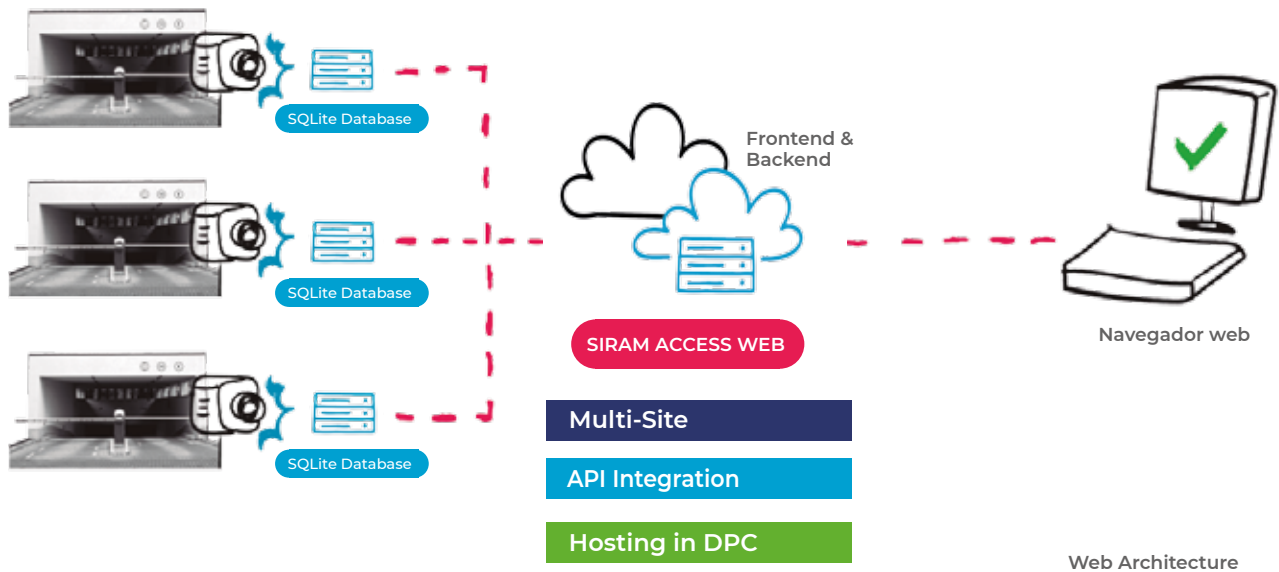
	SUPPORTED HARDWARE	NUMBER OF LANES	OPERATING SYSTEM	SIRAM CLIENT
ACCESS SUITE MINI	PC or Workstation	2	W10 Pro or W11 Pro	Desktop Application
ACCESS SUITE LITE	PC or Workstation	6	W10 Pro or W11 Pro	Desktop Application
ACCESS SUITE SERVER	Server or Virtual Machine	*	W10 Pro, W11 Pro or Windows Server	Desktop Application

(*) The maximum number of lanes depends on the server's specifications

SIRAM ACCESS WEB

The intelligent automatic license plate recognition system (SIRAM) allows for the automatic identification of vehicles accessing different types of parking facilities, controlled access areas, or traveling on specific roads. The system records each traffic event in a log with the following data: recognized license plate, date and time of the event, the road where the event occurred, and the associated image.

SIRAM ACCESS is a valuable tool in matters related to the security of individuals and property, traffic management, and the control of access to restricted areas or urban areas.



SYNC PROCESS OPERATION

- ⚙️ **BACKEND > CAMERA:** Whenever there is a modification of authorized users for the lane or changes in its operational logic.
- ⚙️ **CAMERA > BACKEND:** Every movement of authorized users at the access point is reported to the central database of the system for later reference. In case the attended mode is activated, access incidents are also communicated, which can be resolved in real-time through the web browser.

SIRAM ACCESS WEB FEATURES

- License plate-based access control. No remotes or cards
- Real-time incident control
- Web-based solution
- API for integration with other platforms

FUNCTIONALITIES ACCESS WEB

SIRAM ACCESS WEB is a web-based vehicle access control platform that operates through automatic License Plate Recognition (LPR) technology.

This technological solution enables distributed and real-time management of vehicle access. Access control logic is autonomously executed locally, while management is carried out in a distributed manner, and data is centralized in the Data Processing Center (CPD).

SIRAM ACCESS WEB incorporates the following functionalities:

- ⚙ Real-time visualization of accesses through a web browser.
- ⚙ Management of multiple groups of Authorized or Whitelists: additions, deletions, and modifications.
- ⚙ Management of multiple Blacklists: Add, remove, and modify entries.
- ⚙ Configurable authorized groups on each road.
- ⚙ Management of the number of spaces per Authorized and per Group.
- ⚙ Multiple stocks.
- ⚙ Multiple user profiles.
- ⚙ Attended and Unattended operation modes.
- ⚙ Resolution of incidents from different web browsers.
- ⚙ Control of barriers from the software. Automatic opening according to authorization, manual opening, open lock and closed lock of the barrier.
- ⚙ Management of the total number of spaces in the parking Stock.
- ⚙ Queries for movements, groups (authorized, visitors, and blacklists), stay times, or vehicles inside the premises.

OPERATING MODES

Attended (incident resolution):

Stock Exceeded
Vehicle on Blacklist
Vehicle belonging to an unauthorized group in the lane
Vehicle in the visitors' group and unauthorized in the lane
Blank license plate (image without a license plate)
Expired authorization
Group with no available spaces
Authorized with no available spaces

Unattended

Automatic opening only for Authorized and/or Visitors
Automatic opening for all vehicles at entry and/or exit



ACCESS WEB VERSIONS

	SUPPORTED HARDWARE	NUMBER OF LANES	OPERATING SYSTEM	SIRAM CLIENT
ACCESS WEB LITE	PC or Workstation	6	W10 Pro or W11 Pro	Web Browser
ACCESS WEB SERVER	Server or Virtual Machine	*	W10 Pro, W11 Pro or Windows Server	Web Browser

(*) The maximum number of lanes depends on the server's specifications.



FUNCTIONALITIES	Client Server ACCESS SUITE	Web ACCESS WEB
OPERATION		
Operation - Real-time display of accesses	Desktop Client	Web Client
Operation - Creation of manual movements in the database	✗	●
Operation - Management of barriers from the software. Manual opening, blocking opened/closed barrier	●	●
Operation - Incident resolution (license plate correction and manual opening)	●	●
Operation - Resolution of incidents by multiple operators	●	●
Operation - Automatic barrier opening according to authorization	●	●
Operation - Custom Visits Fields	✗	●
Operation - Open all according to schedule (ZAL Mode)	●	✗
Operation - Zoom in the Viewer Images	●	✗
Operation - Zoom in the Incident Images	●	✗
MANAGEMENT		
Management - Management of multiple groups of Authorized	●	●
Management - Groups with expiration time	●	✗
Management - Authorized Management (Registration, cancellation, assign multiple vehicles)	●	●
Management - Management of the expiration time of the Authorized	●	●
Management - Black List Management. Registrations, cancellations and modifications	Multiple B.L.	Multiple B.L.
Management - Number of spaces management by group and authorized	●	●
Management - Management of stays by group. Maximum stay time	●	●
Management - Management of stays by stock. Maximum stay time	●	●
Management - Management of stays by center. Maximum stay time	✗	●
Management - Lane management. Assignment of authorized Groups in each lane	●	●
Management - Import of authorized from a file	●	●
Management - Export of authorized to a file	●	●
Management - Time slots. Daily templates and weekly calendar	●	●
Management - Multiple user profiles. Assignment of privileges and groups that they can manage	●	●
SETTINGS		
Settings - Attended and Unattended operating mode	●	●
Settings - Timeout resolution with default action	●	●
Settings - Open to all	●	●
QUERIES		
Queries - Inquiries of movements and incidents by Group (authorized, visits and blacklists)	●	●
Queries - Real time Stock queries. Not historic	●	●
Queries - Stays queries	●	●
Queries - Export movements queries to a file	●	●
Queries - Truck lanes queries	●	✗
Queries - Zoom in the Images of the queries	●	✗
FEATURES		
Features - Multi-Stock	✗	●
Features - Multi-Center	✗	●
Features - Associated cameras	●	✗
Feature - Truck Lanes with Front and Rear license plate reading (multicamlane)	●	✗
Feature - Multi-Languages	●	●
Feature - Alarm Notification by E-mail	✗	✗
Feature - Load Active Directory Users & Single Sign On	●	✗
Management - Gray List Management. Registrations, cancellations and modifications	✗	✗